

Dear Parent/Carer,

What a year 2023 has been, we have watched our children and young people grow and develop. We have seen long standing staff members retire and move on and new staff join our team. We continue to grow as a school, we now have 52 pupils and might be at 53 in September 2024. We are excited about our planned playground development that will be partially funded by your amazing fundraising. We are also really excited to confirm that we plan to extend the sports hall and add new toilets and changing areas in the summer. When the plans are finalised, I will ensure that you can come in and see what we are going to do. These changes will ensure that we can offer the best curriculum experience possible for the children.

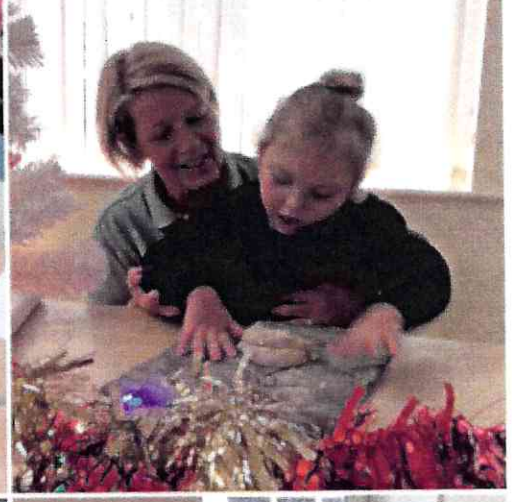
So as another year comes to a close I would like to thank you for your continued support and wish you all a very Happy Christmas and joyful New Year.

School closes on Friday 22 December at 1pm and re-opens on Tuesday 9 January 2024.



Yours Sincerely

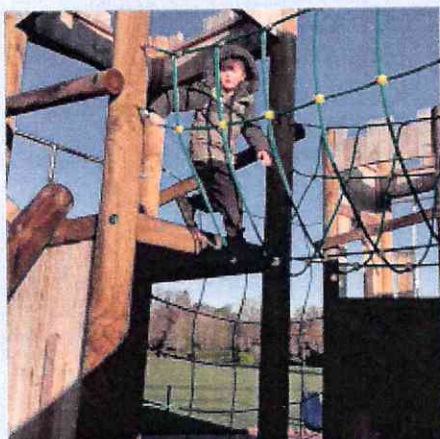
Mrs Penny Derries



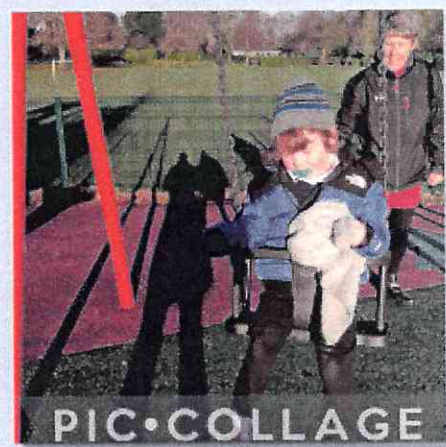
It's
beginning
to look a lot
like
Christmas
in Willow
Class



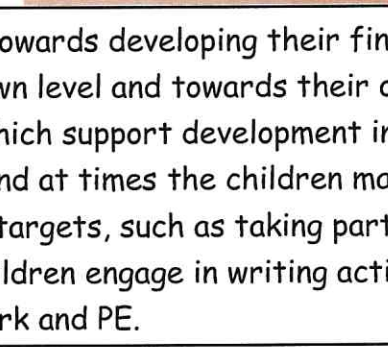
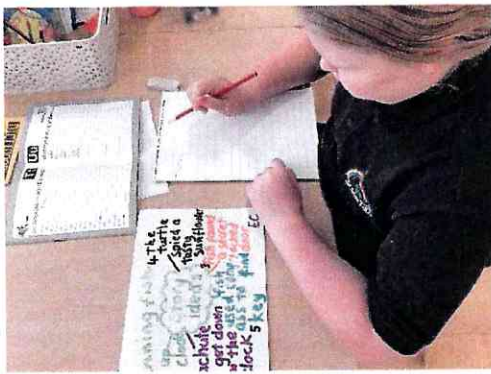
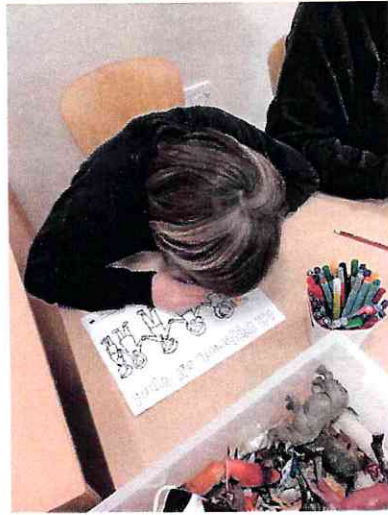
PIC•COLLAGE



To support our physical development, Elm class have been using a wide range of equipment to increase our gross motor skills. This has incorporated visits to local parks, using the bikes in our outdoor area and through weekly opportunities to use the climbing apparatus in the hall. This helps with our balance, core strength, spatial awareness and coordination. We have had lots of fun learning about keeping ourselves healthy, developing social skills and forming early relationships with others in class.

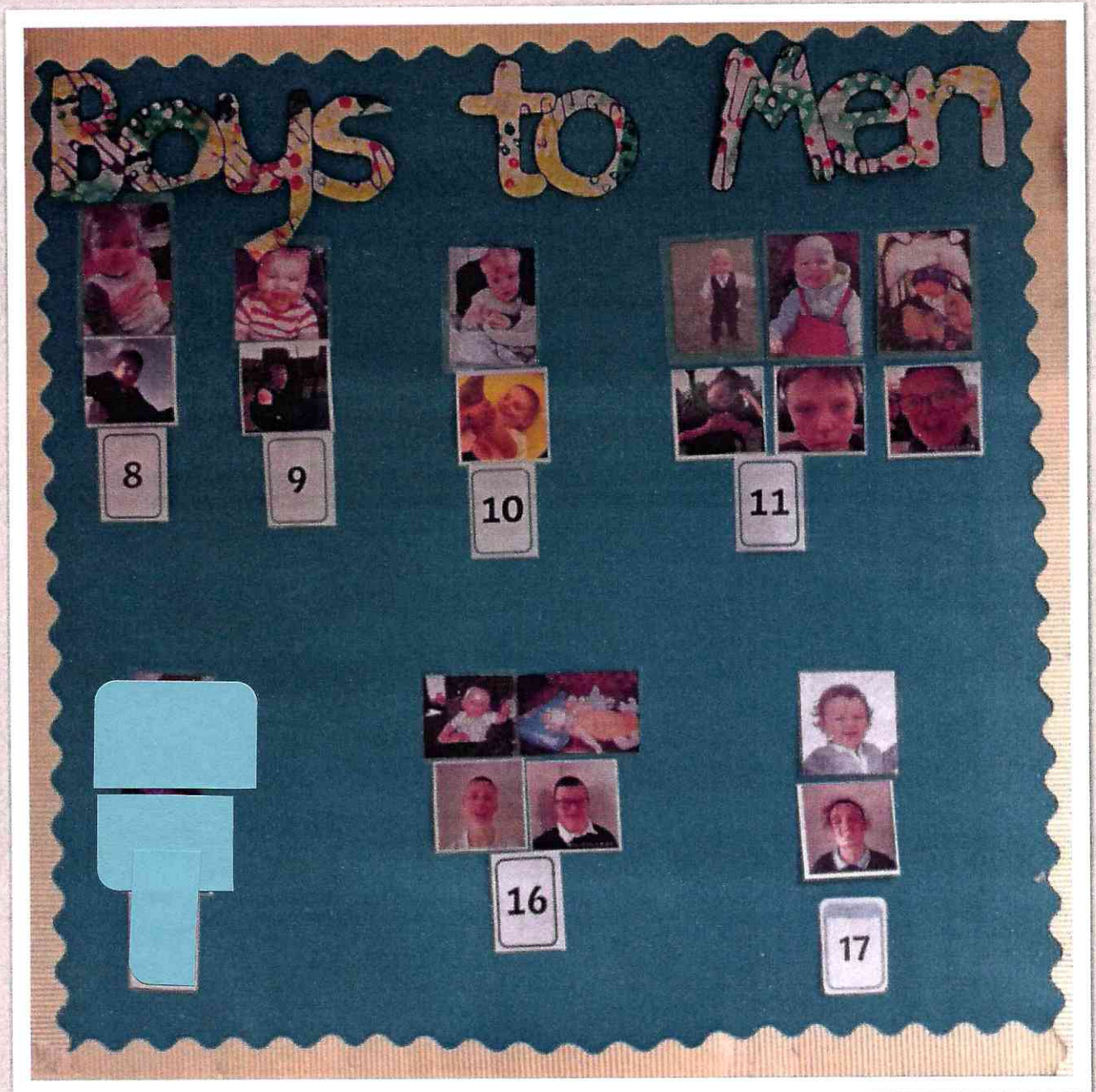


Beech Class



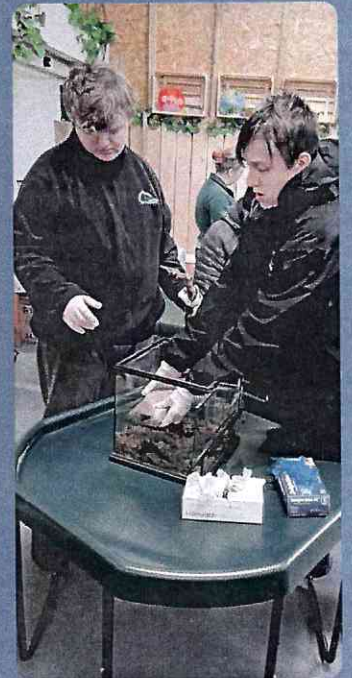
Beech Class continue to work towards developing their fine motor and writing skills. Each individual is working at their own level and towards their own targets although they may share a number of activities which support development in this area. Writing is supported through a range of activities and at times the children may not be aware that they are working towards their writing targets, such as taking part in painting, jigsaws or colouring-in activities. The children engage in writing activities across the curriculum including maths, art, theme work and PE.

Sycamore class have been learning about growing and changing. The Sycamore boys are growing fast!

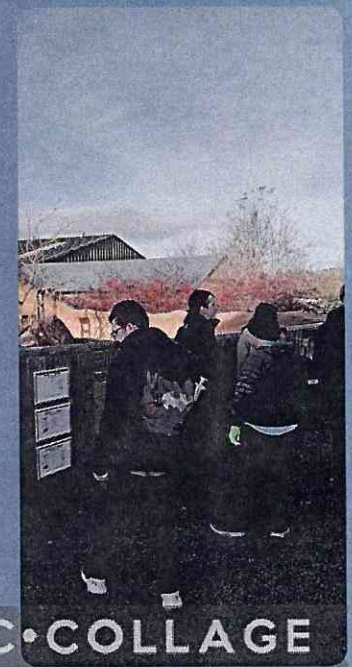


Mrs Henry has been overtaken by the big lads!

PIC•COLLAGE



Oak class enjoyed their visit to Northumberland zoo where we were shown how to care for some animals and we learnt about being a zookeeper and what they do each day.



PIC • COLLAGE



BULLYING vs BANTER

Cherry Class have been exploring how having banter with friends, making jokes and teasing, can quickly turn into bullying if it's repeated lots of times or done in front of others. We listened to some stories and decided whether it was bullying or banter.

