

Dear Parent/Guardian,

I am amazed that I am writing another newsletter for the end of the academic year 2022/223, the year has flown by! All of the pupils have worked so hard this year and have had great successes in so many different ways. The staff are very proud of them all.

As always there are some changes to class groups, the children who are moving classes know who they are and the families have been informed so if you have not been told your child is moving they will remain in their current class next year.

We have new staff joining us and some staff returning from maternity leave. Mrs Johnson and Miss Griffiths are both returning from their maternity leave, Miss Griffiths will be in Willow class and Mrs Johnson will be in Beech class.

We will have the following classes: -

Cherry

Oak

Willow

Sycamore

Beech

Elm

Our new staff are: -

Miss Charley Fleet - Sycamore class, Teaching Assistant

Miss Beth Park - Willow Class Teaching Assistant

Mrs Hannah Brown - Oak Class, Teacher

Additionally, we have the following class moves: -

Mrs Helen Wood - Lead practitioner Oak Class

Miss Rebekah James - Lead practitioner Elm Class

Mr Hamish Blackie - Teaching Assistant Willow Class

Miss Donna Darling - Teaching Assistant Sycamore Class

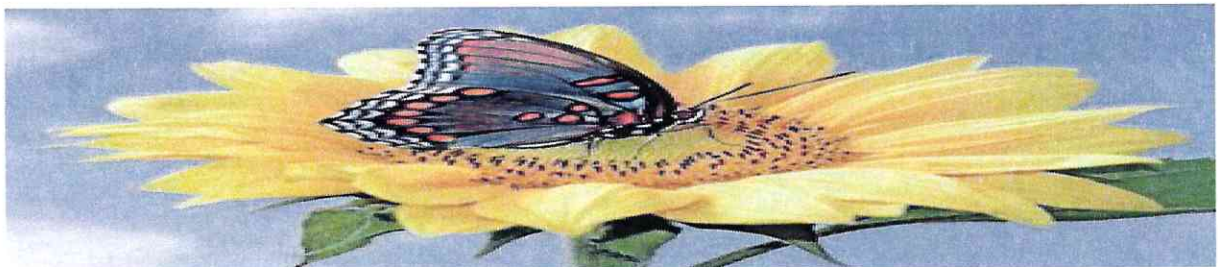
It is exciting to be welcoming new staff and to be supporting other staff members to have a different experience working in another class in school.

We are so grateful for all your support over the past year, we have had some challenging times but as always, we have kept going and come through the other side with positivity and happiness. We are excited about our plans for the future, we are in the process of getting plans drawn up for work on the main building and yard first. We will of course share these plans with you all once they have been approved. We are so very grateful to all of you who have mobilised to fund raise for us. We will be sorting the raffle out as soon as possible so we can start selling tickets. People have been so generous with prices and we have enough to do two raffles one now and one nearer Christmas. I am aware that there is a sponsored walk being organised, please let us know the details so I can put this on the website and share with staff.

We hope that the lovely weather we have been having will continue through the holidays so that you can all get out and about. We finish school at 1.00pm on the 21st July and the children return to school on the 6th September at 9.00am. Thank you for another wonderful year.

Yours Sincerely

Mrs Penny Derries





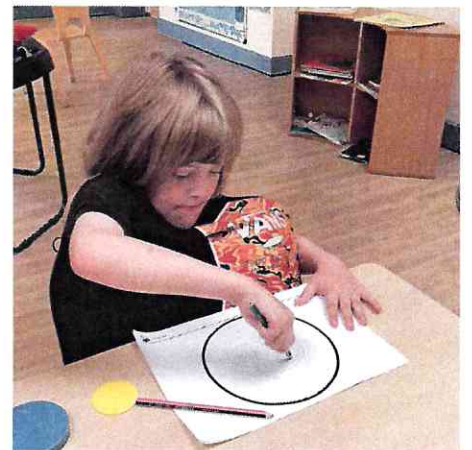
Willow class have been exploring The World We Live in which is the theme for this term.



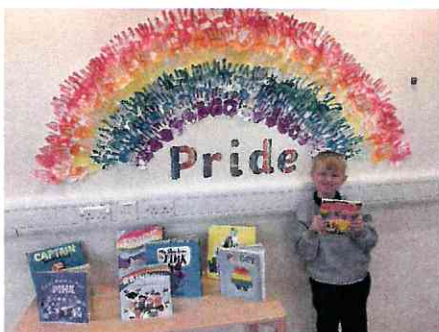
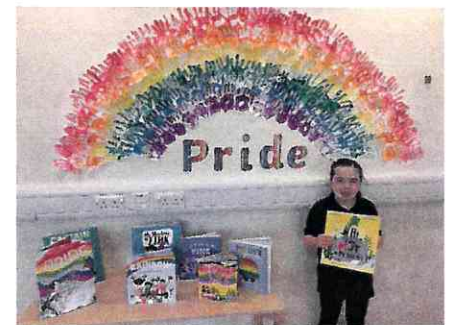
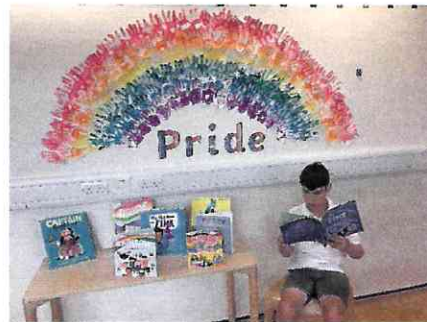
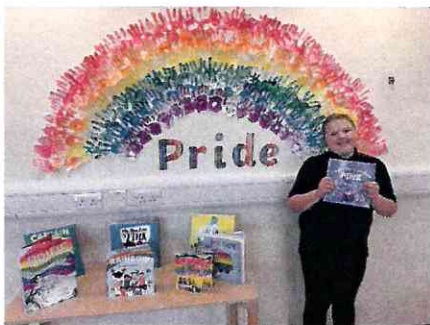
PIC • COLLAGE



Elm class have been focusing on 2D shapes. We have printed using fruits, made pizza's with circular ingredients, played with shapes outside and used our pencil control skills to draw round circles.

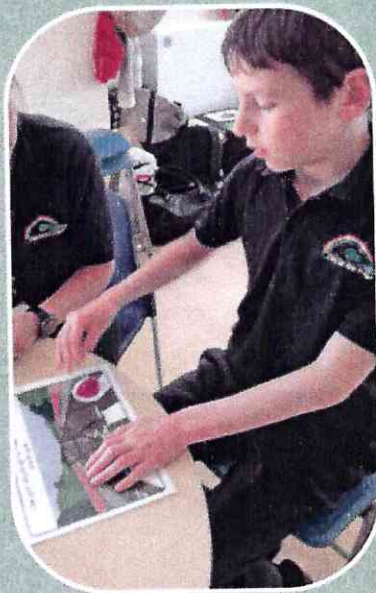
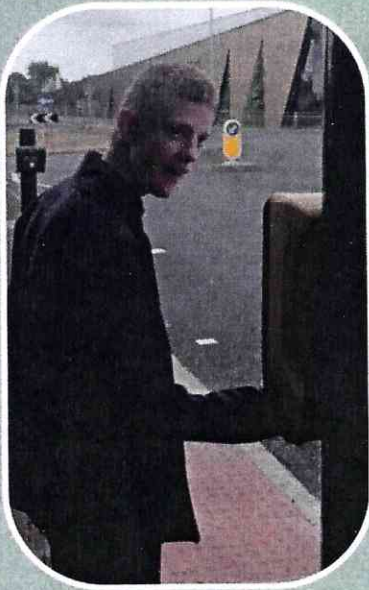


Beech Class

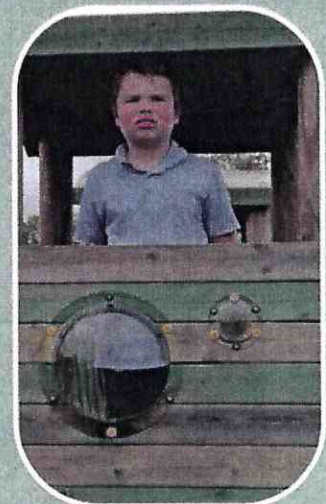


Beech Class have celebrated and developed their understanding of Pride this month. We have focussed on the theme of 'Being Proud to be Yourself' and explored this through discussion and art as well as sharing books and stories. We have thought about being an individual and leading the life that feels right to you, alongside never judging the choices made by others. In our pictures the children are presenting the book that they have most enjoyed over the past month.

Sycamore Class have been learning about safe road crossing and practicing their skills when travelling in the community.



Waiting, looking, listening, checking if it's safe to cross.



We reached our destination safely! The boys are still on the look out for traffic 🙌





Summer Term 2023

Oak Class recently had an amazing time at Countryside Day in Wooler. We designed and made a fantastic flag highlighting global warming which was up on display. We had great fun participating in interactive display stands. We gained experience and knowledge about: tree surgery; bee keeping; birds of prey; hound dogs; sheep shearing; harvesting; animals and habitats; dairy farming; mini goats and donkeys; flooding; water pollution and much more.

